

PRODUCT CATALOGUE

IMPROVING TECHNOLOGIES
IMPROVED HEALTH



EARLY JUDGEMENT of RELATED DISEASES
RAPID INFECTION CLASSIFICATION
ACCURATE TREATMENT EVALUATION



IMPROVING TECHNOLOGIES
IMPROVED HEALTH

COMPANY PROFILE



Established in Beijing, 2013, Pro-med has been qualified as National High-tech Enterprise based on professional IVD detecting service, which contains instruments and agents of POCT, coagulation and molecular diagnosis.

With deep concern about public healthcare and clinical demands, Pro-med develops different PMDT qualitative/quantitative analysis systems for diseases diagnosis such as respiratory pathogens detecting, bacteria/virus infection distinguishing, AMI & HF managing, gastric system disorder, low health level and series of common infectious diseases rapid testing.

As for clinical coagulation analysis, Pro-med provides an easy but clear solution by CWPS thrombelastograph, which could evaluate coagulation capacity through progress of thrombin activation, fibrin formation, platelet aggregation and fibrinolysis. Besides, a real-time coagulation graph could also be auto-drawn to visualize these progresses in the final report.

May the Pro-med products deliver pleasant experiences by accurate diagnosis, convenient operation and professional services to all users and clients!

IMPROVING TECHNOLOGIES, IMPROVED HEALTH

TABLE OF CONTENTS

01

ACCURATE QUANTITATIVE ANALYSIS SYSTEM

PMDT9000 Immunofluorescence Analyzer—02
Feature Detection Kits—03



02

RAPID QUALITATIVE ANALYSIS SYSTEM

Feature Colloidal Gold Detection Kits—08

03

THROMBELASTOGRAPH

CWPS TEG analyzer—10
Feature Thrombelastograph Detection Kits—11



04

MOLECULAR DIAGNOSTICS

Real-time PCR system—10
Feature Molecular Detection Kits—11



01

ACCURATE QUANTITATIVE ANALYSIS SYSTEM

PMDT9000 Immunofluorescence Analyzer—02
 Feature Detection Kits—03

PMDT9000 IMMUNOFLUORESCENCE ANALYZER

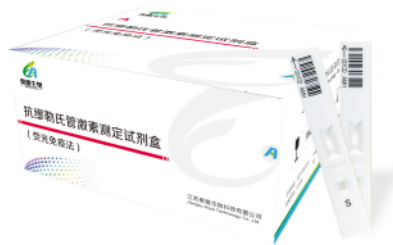


Power	AC220, 50Hz
Detection time	5-15min
Available value	0 ~ 70000mv
Size	267*220*140mm

Feature Immunofluorescence Detection Kits

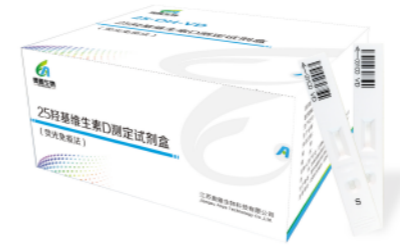
Thyroid Hormone

- **TSH Rapid Test**
Thyroid function evaluation
- **T3 Rapid Test**
Specific diagnostic indicators of T3-type hyperthyroidism
- **T4 Rapid Test**
Specific diagnostic indicators of T4-type hyperthyroidism
- **FT3**
Specific diagnostic indicators of FT3-type hyperthyroidism
- **FT4**
Specific diagnostic indicators of FT4-type hyperthyroidism



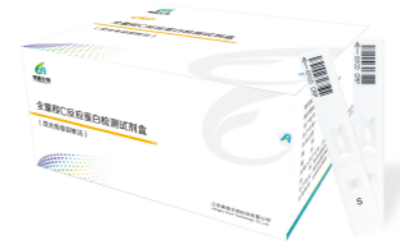
Hormone

- **β-HCG Rapid Test**
Assist in judging pregnancy
- **AMH Rapid Test**
Ovarian health evaluation
- **INH-B Rapid Test**
Evaluation of testicular spermatogenesis function



Cardiac & Cerebral Diseases

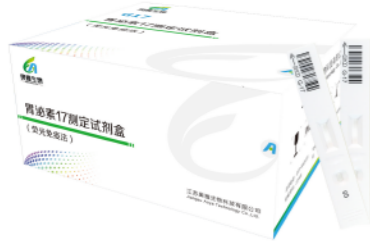
- **ST2/NT-proBNP Rapid Test**
Comprehensive management of heart failure
- **ST2 Rapid Test**
Early recognition; risk evaluation
Prognostic assessment of heart failure
- **D-Dimer Rapid Test**
Clotting condition determination
- **NT-proBNP Rapid Test**
Diagnosis of heart failure; Identification of dyspnea
- **cTnI/Myo/CK-MB Rapid Test**
Diagnosis of myocardial injury
Evaluation of myocardial infarction
- **S100 Rapid Test**
Markers of brain injury
- **CK-MB Rapid Test**
Diagnosis of myocardial injury
Evaluation of myocardial infarction
- **B-type natriuretic Rapid Test**
Diagnosis of heart failure
Identification of dyspnea
- **cTnI Rapid Test**
Markers of myocardial injury
- **Myo Rapid Test**
Diagnosis of myocardial injury
Evaluation of myocardial infarction



Inflammation & Infection

- **Procalcitonin Rapid Test (PCT)**
Systemic bacterial infections; Sepsis recognition
- **C Reactive Protein (hs-CRP+CRP) Rapid Test**
Assists in the diagnosis of sepsis and severe bacterial infections; Guidance on the rational use of antibiotics
Assists in the differential diagnosis of local and systemic bacterial infections
- **Serum Amyloid A Protein/C Reactive Protein (hs-CRP+CRP) Rapid Test (SAA/CRP)**
Assists in identifying bacterial/viral infections; Auxiliary assessment of the course of infectious disease
Guidance on the rational use of antibiotics
- **Serum Amyloid A Protein Rapid Test (SAA)**
Assists in identifying bacterial/viral infections; Auxiliary assessment of the course of infectious disease
Guidance on the rational use of antibiotics
- **IL-6 Rapid Test**
Quick inflammatory determination

Feature Immunofluorescence Detection Kits



Gastric Health

- **Pepsinogen I, Pepsinogen II Rapid Test PG I /PG II**
Gastric mucosal injury judgment
- **Gastrin-17 Rapid Test G17**
Suggests gastric acid secretion; Gastric health testing indicators

Tumor

- **CEA Rapid Test**
Assist in the diagnosis of malignancy
- **AFP Rapid Test**
An important marker of liver cancer prognosis



Healthcare

- **25-OH-VD**
Assess VD levels; Bone, immunity, cell growth related
- **VB12 Rapid Test**
Nutrition level evaluation
- **N-MID Rapid Test**
Osteoporosis risk screening; Osteoporosis type discrimination/Endocrine-related
- **Ferritin Rapid Test**
Predicts iron deficiency anemia

PMDT 9000 CATALOG

SERIES	PRODUCT NAME	REF	SAMPLE	CUT OFF	LINEAR RANGE
Thyroid Hormone	TSH	PMDIA	serum/plasma/whole blood	0.3-5.6 μIU/mL	0.10~100.00μIU/mL
	T3	PMDIB	serum/plasma/whole blood	1.23~3.07 nmol/L	0.61~9.22 nmol/L
	T4	PMDIC	serum/plasma/whole blood	66~181 nmol/L	12.87~300 nmol/L
	FT3	PMDID	serum/plasma/whole blood	3.1~6.8 pmol/L	0.40~50 pmol/L
	FT4	PMDIE	serum/plasma/whole blood	12~22 pmol/L	0.30~100 pmol/L
Hormone	β-HCG	PMDJA	serum/plasma/whole blood	various by age	5.00~5000.00 IU/L
	AMH	PMDJI	serum/plasma/whole blood	various by gestational week	0.1~18.00ng/mL
	INH-B	PMDJL	serum/plasma/whole blood	Male: 16.61~278.86pg/mL Female: various by age	10.00~900.00pg/mL
Cardiac & Cerebral Diseases	sST2/NT-proBNP	PMDFE	serum/plasma/whole blood	sST2:<35.00ng/ mL NT-proBNP:<300.00 pg/mL	sST2: 5.00~200.00ng/mL NT-proBNP: 100.00~20000.00pg/mL
	sST2	PMDFD	serum/plasma/whole blood	<35.00ng/ mL	5.00~200.00ng/mL
	NT-proBNP	PMDFB	serum/plasma/whole blood	<300.00 pg/mL	100.00~20000.00pg/mL
	BNP	PMDFC	serum/plasma/whole blood	<100.00 pg/ml	50.00~3000.00pg/mL
	cTnl/CK-MB/Myo	PMDFI	serum/plasma/whole blood	cTnl:<1.00ng/ mL Myo:<70.00ng/ mL CK-MB:<5.00ng/ mL	cTnl: 0.30~25.00ng/mL Myo: 25.00~500.00ng/mL CK-MB: 2.50~300.00ng/mL
	D-Dimer	PMDFA	serum/plasma/whole blood	<500ng/mL	200.00~5000.00ng/mL
	S100-β	PMDFH	serum/plasma/whole blood	<0.11ng/ mL	0.08~10.00ng/mL
	cTnl	PMDFJ	serum/plasma/whole blood	<1ng/ mL	0.2~40.00ng/mL
	CK-MB	PMDFL	serum/plasma/whole blood	<5.0 ng/ mL	3.00~80.00ng/mL
MYO	PMDFK	serum/plasma/whole blood	<70.00ng/ mL	50.00~400.00ng/mL	
Inflammation & Infection	SAA/CRP	PMDGC	serum/plasma/whole blood	CRP:<10.00 mg/L hs-CRP:<3.00 mg/L SAA: <10.00 mg/L	SAA: 5.00~150.00mg/L CRP: 0.50~200.00mg/L
	SAA	PMDGB	serum/plasma/whole blood	<10.00 mg/L	5.00~150.00mg/L
	CRP	PMDGA	serum/plasma/whole blood	CRP:<10.00 μg/mL hs-CRP:<3.00 μg/mL	0.50~200.00mg/L
	PCT	PMDGD	serum/plasma/whole blood	<0.50 ng/mL	0.10~40.00ng/mL
	IL-6	PMDGE	serum/plasma/whole blood	<10pg/mL	3.00~4000pg/mL
Gastric Health	PGI/II	PMDHB	serum/plasma/whole blood	PGI:>50.00ng/ml PGII:<15ng/ml	PGI: 5.00~100.00ng/mL PGII: 1.00~50.00ng/mL
	G17	PMDHC	serum/plasma/whole blood	1.00-7.00pmol/L	1.00~20.00pmol/L
Tumor	AFP	PMDOA	serum/plasma	< 10.0ng/mL	3.0~2000.0ng/mL
	CEA	PMDOB	serum/plasma	< 5 ng/mL	Correlation Coefficient (R) is ≥ 0.99
Healthcare	25-OH-VD	PMDKB	serum/plasma/whole blood	27.99~81.81ng/mL	5.00~100.00ng/mL
	FER	PMDKA	serum/plasma/whole blood	> 20.00ng/mL	10.00~100.00ng/mL
	N-MID	PMDKD	serum/plasma	4.00ng/ ml-30.00 ng/mL	3.00~100.00ng/mL
	VB12	PMDKC	serum/plasma	200.00~800.00pg/mL	150.00~2000.00pg/mL



PMDT9000
classic: 120T/H



PMDT9100
High efficiency: 200T/H

02

RAPID QUALITATIVE ANALYSIS SYSTEM

Feature Colloidal Gold Detection Kits/07

Feature Colloidal Gold Detection Kits

COVID-19

- COVID-19 Antigen Rapid Detection Kit
- COVID-19 IgM & IgG Antibody Detection Kit
- COVID-19 Neutralizing Antibody Rapid Detection Kit
- Influenza A+B and COVID-19 Antigen Combo Rapid Detection Kit



Respiratory Tract

- Adenovirus IgM Antibody Rapid Test
- Respiratory Syncytial Virus IgM Antibody Rapid Test
- Influenza A Virus IgM Antibody, Influenza B Virus IgM Antibody and Parainfluenza Virus IgM Antibody Combined Rapid Test
- Influenza A virus and Influenza B Virus Antigen Combined Rapid Test
- Mycoplasma Pneumoniae IgG antibody and IgM Antibody Rapid Test
- Chlamydia Pneumoniae IgG Antibody and IgM Antibody Rapid Test
- Mycobacterium Tuberculosis Antibody Rapid Test Kit
- Clostridium Difficile GDH+ToxinA+ToxinB Antigen Rapid Test Kit (Colloidal Gold)
- Influenza A, Influenza B, COVID-19, Respiratory Syncytial Virus and Adenovirus Antigen Combo Rapid Detection Kit (Colloidal Gold)
- Rotavirus /Adenovirus Antigen Rapid Test (Immunochromatography)

Gastric Health

- Helicobacter Pylori IgG Antibody Rapid Test
- HP Antigen Rapid Test

Monkeypox Virus

- Monkeypox Virus IgG/ IgM Rapid Test Kit

03

THROMBELASTOGRAPH

CWPS TEG analyzer/10
Feature Thrombelastograph Detection Kits/11

CWPS-8800 TEG Analyzer

Integrated TEG analyzer

- Semi-automated TEG analyzer
- Integrated analyzer and computer, PC free
- Capable for all TEG tests in a single 4-channeled analyzer



Power	AC220, 50Hz
Detection time	≥30min
channel number	4
Size	348*355*525mm

Feature Thrombelastograph Detection Kits



CK Test

Thrombelastograph (General Cup)

- general detection of coagulation capability
- risk evaluation of thrombus diseases and bleeding
- stable QC for products quality

SAMPLE: CITRATED WHOLE BLOOD
SPECIFICATION: 1/5/10/20/25/30/40/50 TEST/KIT



AA, ADP, AA&ADP Test

Platelet Aggregation Function Test

- Effect evaluation of platelet aggregation
- Function test of anti-platelet drugs
- AA for aspirin, ADP for clopidogrel (Plavix), tegrello and so on

SAMPLE: CITRATED&HEPARINED WHOLE BLOOD
SPECIFICATION: 1/5/10/20/25/30/40/50 TEST/KIT



CRT Test

Activation of Blood Coagulation Test

- Rapid detection of coagulation capability
- Fast coagulation judgement for emergency
- Monitoring in surgery, ICU or even field trauma

SAMPLE: CITRATED WHOLE BLOOD
SPECIFICATION: 1/5/10/20/25/30/40/50 TEST/KIT



CKH Test

Thrombelastograph (Heparinase Cup)

- Fast detection of heparin in blood
- Effect evaluation of heparin neutralization therapy
- Test to find real reason of bleeding

SAMPLE: CITRATED WHOLE BLOOD
SPECIFICATION: 1/5/10/20/25/30/40/50 TEST/KIT

04

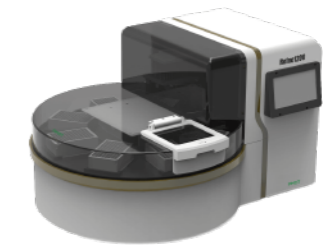
Molecular diagnostics

Real-time PCR system /14
Feature Molecular Detection Kits/14

Automated PCR analyzing system



- Available for DNA extraction and RT-PCR
- Capable for testing, analyzing and screening, PC free



- Suitable for most of PCR systems and agents
- Stable in continuous experiments

Applicable reaction system	15 – 1500 μ L
Available reaction tunnels	96
Repeatability	CV \leq 3.00%
linearity	r \geq 0.99
Detecting wavelength	(500-800) nm

Feature Molecular Detection Kits

- 2019-nCoV RT-PCR Test kit
- 2019-nCoV /FluA/FluB RT-PCR Test Kit
- 2019-nCoV/FluA/FluB/RSV/ADV RT-PCR Test Kit
- Respiratory pathogens six-fold detection kit (PCR fluorescent probe method)
- Monkeypox virus Nucleic Acid Diagnostic Kit (PCR-Fluorescence Probing)





Pro-med (Beijing) Technology Co., Ltd